

## Ex-ON/OFF-Switch

GS ... Ex



## Contents

3	Description
4	GS 5 Ex
5	GS 6 Ex
6	GS 8 Ex
7	GS 9 Ex

# GS

## Ex-ON/OFF-Switch



### Description

- Explosion protection to CENELEC and IEC
- For use in Zone 1 and Zone 2; Zone 21 and Zone 22
- Motor switching capacity AC 23 acc. to
  - IEC 60947-3
  - EN 60947
  - DIN VDE 0660 Teil 107
- with up stream contact
- definite opening for main contacts
- isolating switches acc. to DIN VDE 0660
- can be padlocked in „OFF“ position
- non-reversible switch with defined switch position
- high level of corrosion resistance in external components
- marked with signal orange label “Safety Switch”

### Ex-ON/OFF-Switch

ON/OFF-Switch of category AC-23 (switch from engines or other high-inductive loads) according to DIN VDE 0660 part 107.

Safety switches ensure the obligatory isolation of electrical power under condition of equipment cleaning, maintenance and repair. Other methods of isolation, e.g. removal of fuses or disconnection of motors, which require qualified electricians, are unnecessary. With the performed safety switches it is distinguished between counters with or without thermistor connection. The thermistor connection of the thermistor if this is led together with the engine cable.

### Handling of the connection diagram:

On the connection diagram (e.g. 1/2; 3/4; ...) the operated condition of the switching contacts is marked by an X. The number and kind of the main and auxiliary contacts are defined in switching position 0/OFF.

**NO corresponds to “normally open” and NC “normally closed”.**

# GS 5 Ex

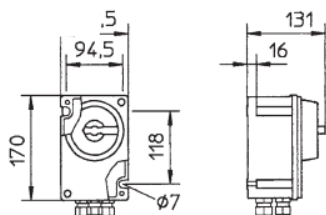
Ex-ON/OFF-Switch



## Information:

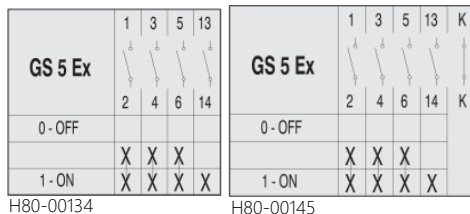
Type	Art.-No.	Power [kW]	U [V] f [Hz]	Protection Class	Thermistor Connection
GS 5 Ex	H80-00134	7.5	400/50/60	IP 65	-
GS 5 Ex	H80-00145	7.5	400/50/60	IP 65	✓

## Dimensions:



Type	Art.-No.	Cable Entries
GS 5 Ex	H80-00134	2x M25x1.5; 1x M20x1.5
GS 5 Ex	H80-00145	2x M25x1.5; 1x M20x1.5

## Wiring Diagram:



	GS 5 Ex	GS 5 Ex
Art.-No.	H80-00134	H80-00145
Main Contact	3 NO (1/2; 3/4; 5/6)	3 NO (1/2; 3/4; 5/6)
Auxiliary Contact	1 NO (13/14)	1 NO (13/14)
Type	8537/2-702-7000	8537/2-702-7006

## Scope of Delivery:

- Ex-ON/OFF-switch (GS 5 Ex)
- Documentation

# GS 6 Ex

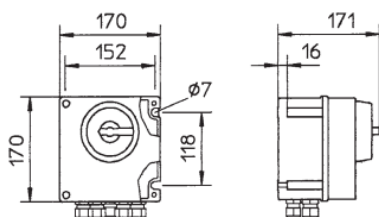
Ex-ON/OFF-switch



## Information:

Type	Art.-No.	Power [kW]	U [V] f [Hz]	Protection Class	Thermistor Connection
GS 6 Ex	H80-00140	7.5	400/50/60	IP 65	-
GS 6 Ex	H80-00146	7.5	400/50/60	IP 65	✓

## Dimensions:



Type	Art.-No.	Cable Entries
GS 6 Ex	H80-00140	4x M25x1.5; 1x M20x1.5
GS 6 Ex	H80-00146	4x M25x1.5; 1x M20x1.5

## Wiring Diagram:

GS 6 Ex	1	3	5	7	9	01	13	23
0-OFF	2	4	6	8	10	02	14	24
1-ON	X	X	X	X	X	X	X	X

H80-00140

GS 6 Ex	1	3	5	7	9	01	13	23	K
0-OFF	2	4	6	8	10	02	14	24	K
1-ON	X	X	X	X	X	X	X	X	X

H80-00146

	GS 6 Ex	GS 6 Ex
Art.-No.	H80-00140	H80-00146
Main contact	6 NO (1/2; 3/4; 5/6; 7/8; 01/02)	6 NO (1/2; 3/4; 5/6; 7/8; 01/02)
Auxiliary contact	2 NO (13/14; 23/24)	2 NO (13/14; 23/24)
Type	8537/2-802-8000	8537/2-802-8006

## Scope of Delivery:

- Ex-ON/OFF-switch (GS 6 Ex)
- Documentation

# GS 8 Ex

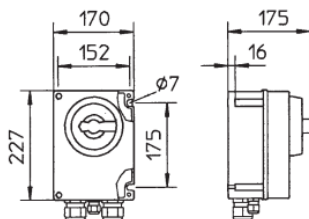
Ex-ON/OFF-switch



## Information:

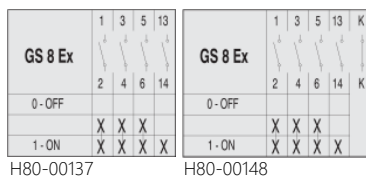
Type	Art.-No.	Power [kW]	U [V] f [Hz]	Protection Class	Thermistor Connection
GS 8 Ex	H80-00137	22	400/50/60	IP 65	-
GS 8 Ex	H80-00148	22	400/50/60	IP 65	✓

## Dimensions:



Type	Art.-No.	Cable Entries
GS 8 Ex	H80-00137	4x M40x1.5; 1x M20x1.5
GS 8 Ex	H80-00148	4x M40x1.5; 1x M20x1.5

## Wiring Diagram:



	GS 8 Ex	GS 8 Ex
Art.-No.	H80-00137	H80-00148
Main contact	3 NO (1/2; 3/4; 5/6)	3 NO (1/2; 3/4; 5/6)
Auxiliary contact	1 NO (13/14)	1 NO (13/14)
Type	8537/2-705-7000	8537/2-705-7006

## Scope of Delivery:

- Ex-ON/OFF-switch (GS 8 Ex)
- Documentation

# GS 9 Ex

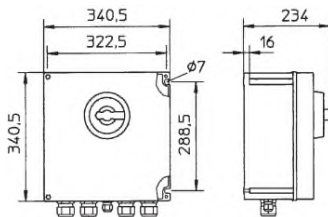
Ex-ON/OFF-switch



## Information:

Type	Art.-No.	Power [kW]	U [V] f [Hz]	Protection Class	Thermistor Connection
GS 9 Ex	H80-00138	22	400/50/60	IP 65	-
GS 9 Ex	H80-00149	22	400/50/60	IP 65	✓

## Dimensions:



Type	Art.-No.	Cable Entries
GS 9 Ex	H80-00138	4x M40x1.5; 1x M20x1.5
GS 9 Ex	H80-00149	4x M40x1.5; 1x M20x1.5

## Wiring Diagram:

GS 9 Ex	1	3	5	7	9	01	13	23
0-OFF	2	4	6	8	10	02	14	24
1-ON	X	X	X	X	X	X	X	X

H80-00138

GS 9 Ex	1	3	5	7	9	01	13	23	K
0-OFF	2	4	6	8	10	02	14	24	K
1-ON	X	X	X	X	X	X	X	X	X

H80-00149

	GS 9 Ex	GS 9 Ex
Art.-No.	H80-00138	H80-00149
Main contact	3 NO (1/2; 3/4; 5/6; 7/8; 01/02)	6 NO (1/2; 3/4; 5/6; 7/8; 01/02)
Auxiliary contact	2 NO (13/14; 23/24)	2 NO (13/14; 23/24)
Type	8537/2-805-8000	8537/2-805-8006

## Scope of Delivery:

- Ex-ON/OFF-switch (GS 9 Ex)
- Documentation