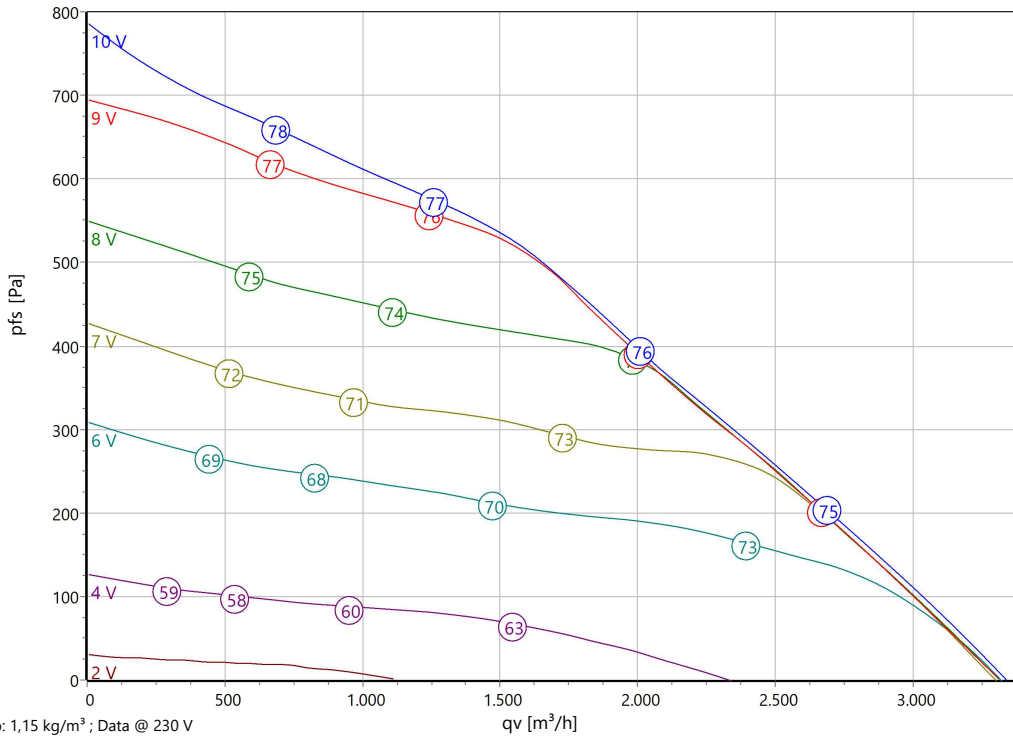




Type: **DRAG 251.4FF**
Part no.: C52-25100



Curve:



ErP-Data:

	(EU) Nr. 327/2011	(Lot11)
qV	1849	m ³ /h
pf	500	Pa
η _{tot}	54,5	%
Ped	0,524	kW
n	1478	r/min
N	63	
v	10,0	m/s

Nominal Data:

U [V]	f [Hz]	Data @ [V]	Ped [kW]	IN [A]	nN [r/min]	tR [°C]	k10 [m ² /h]	Eff.-Rating	IP	m [kg]
1~200-277	50/60	230	0,52	2,3	1700	-25 .. +40	-	IE4	IP 54	15

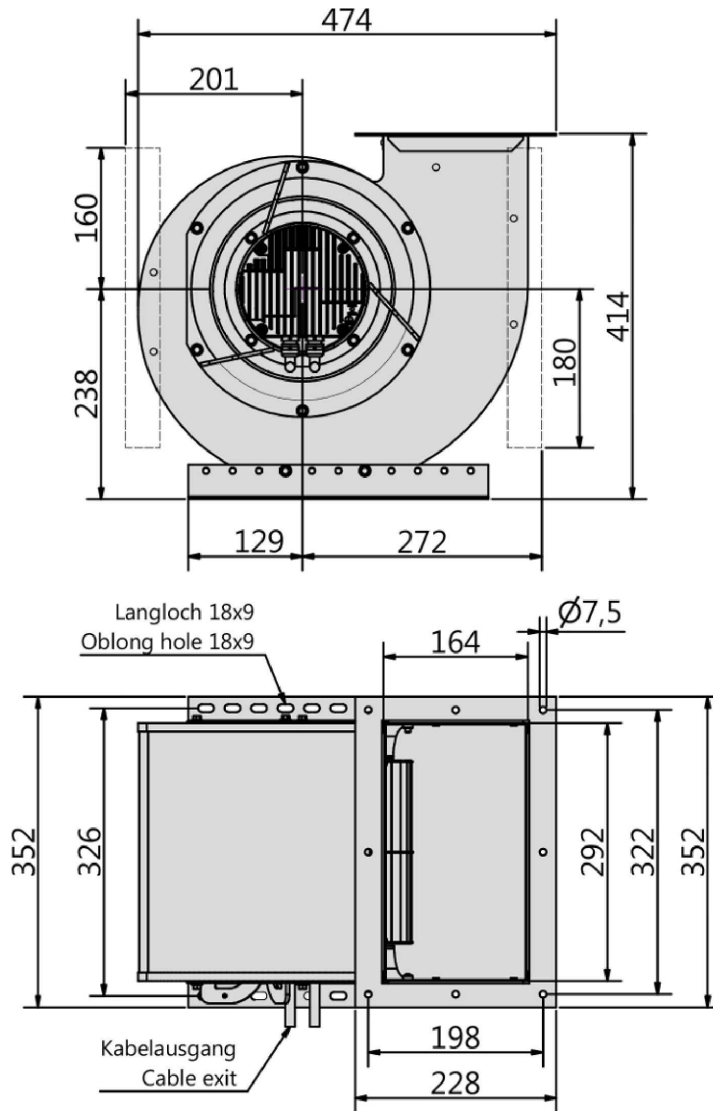
Sound Data:

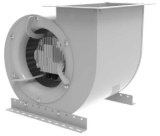
Frequency	Σ	63Hz	125Hz	250Hz	500Hz	1kHz	2kHz	4kHz	8kHz	Distances	1 m	5 m
LwA(A,in) [dB(A)]	-2	-37	-21	-15	-11	-7	-8	-9	-16	LpA(A,in) [dB(A)]	-9	-20
LwA(A,out) [dB(A)]		-33	-22	-16	-10	-5	-5	-7	-15	LpA(A,out) [dB(A)]	-7	-18



Type: **DRAG 251.4FF**

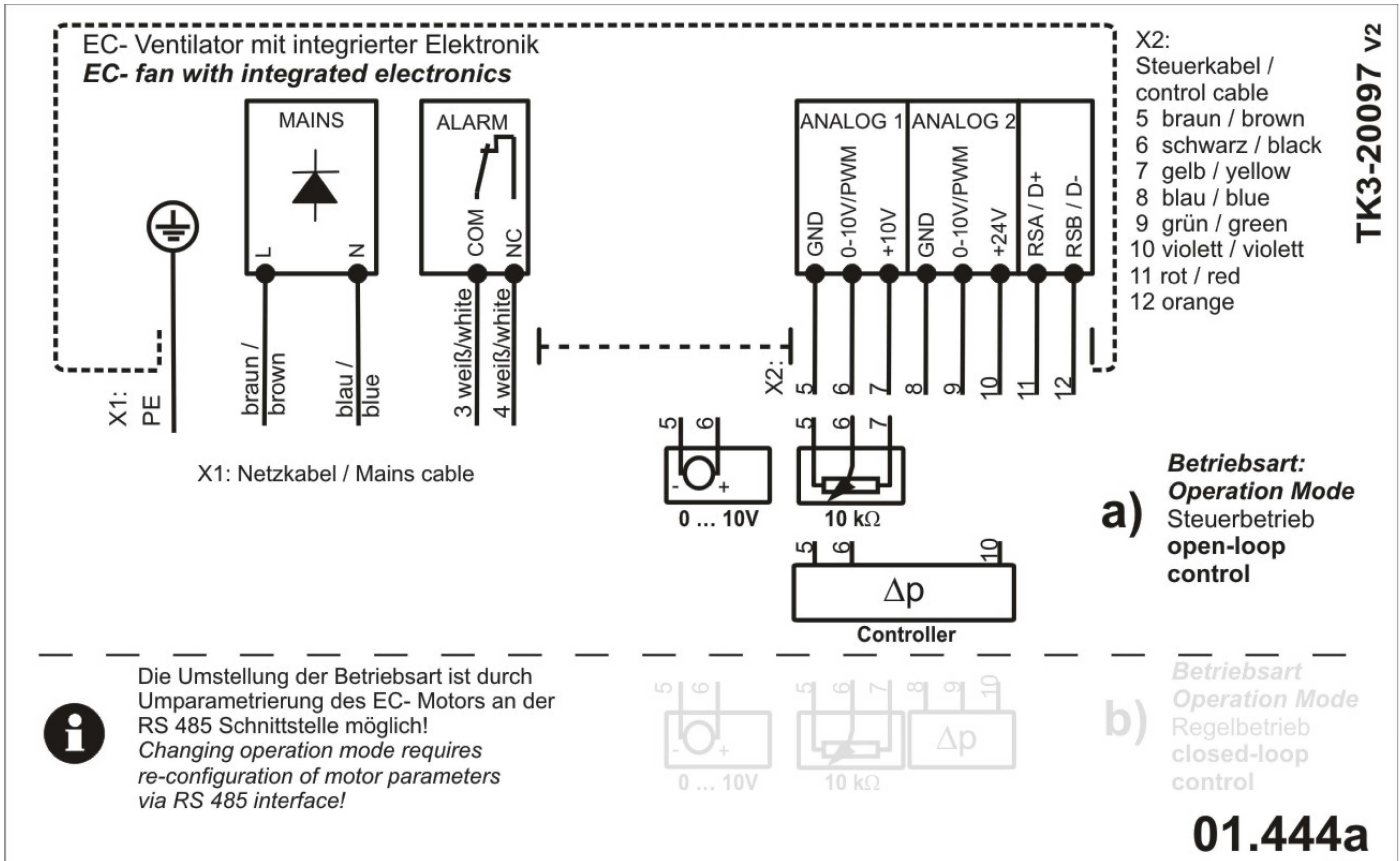
Part no.: C52-25100





Type: **DRAG 251.4FF**

Part no.: C52-25100



EC-Centrifugal Fan

in scroll casing with forward curved impeller

Double inlet impeller made of galvanized steel sheet with forward curved blades. Due to the high number of blades results in a sound optimized and at the same time compact design. Fluidic optimized scroll casing made from galvanized sheet metal. Double inlet. Stands respectively casing mountable in all 90° positions. Motorized Impeller statically and dynamically balanced according to DIN ISO 21940-11 with quality level G2.5. Energy saving EC external-rotor motor exceeds IE4 / Super Premium Efficiency. Maintenance free ball bearings, closed on both sides with long-term lubrication. Magnets without rare earth elements. Motor coated black and/or die casted aluminum. Protection Class IP54. 1-phase types with cable for supply and controlling and integrated active PFC (Power Factor Correction). 3-phase types with integrated terminal box and environmental resistant cable glands (3x M20x1,5). 100% speed controllable with integrated Motor Protection. ModBus RTU Interface integrated. Busconfiguration possible on site by customer. Soft Start. Potential-free Alarm Contact and integrated 24V Supply for Accessories. Applicable in all common energy grids. Low noise commutation.

Fan complies with the guidelines required (Machinery-, EMC- and Low Voltage Directive) to comply with installation and conformity declaration as well as CE marking. Standard version with UL approval.

Nominal Data:

Voltage

1~200-277 V

Frequency

50/60 Hz

Input power

0,52 kW

Current

2,3 A

Speed

1700 r/min

Medium temperature

40 °C

Protection Mode

IP 54

Efficiency Class

IE4

Weight

15 kg

Dimensions

431 mm / 352 mm / 376 mm

Contact:

Rosenberg Ventilatoren BV

Elandlaan 8

NL - 3734 CP Den Dolder

www.rosenberg.nl

Type:

DRAG 251.4FF

Article-No.:

C52-25100
