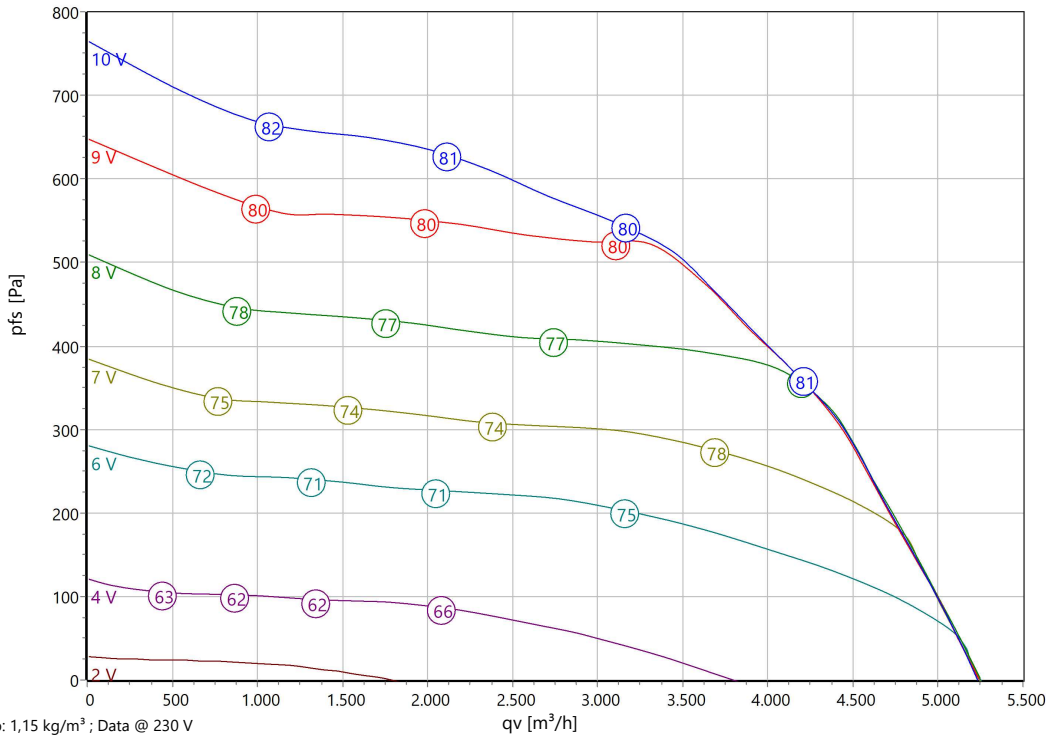


Type: **DRAG 281.5FA**
Part no.: C52-28100



Curve:



ErP-Data:

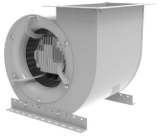
	(EU) Nr. 327/2011	(Lot11)
qV	3737	m ³ /h
pf	551	Pa
η _{tot}	56,1	%
Ped	1,11	kW
n	1346	r/min
N	62	
v	13,0	m/s

Nominal Data:

U [V]	f [Hz]	Data @ [V]	Ped [kW]	IN [A]	nN [r/min]	tR [°C]	k10 [m ² s/h]	Eff.-Rating	IP	m [kg]
1~200-277	50/60	230	1,11	4,9	1550	-25 .. +40	-	IE4	IP 54	25

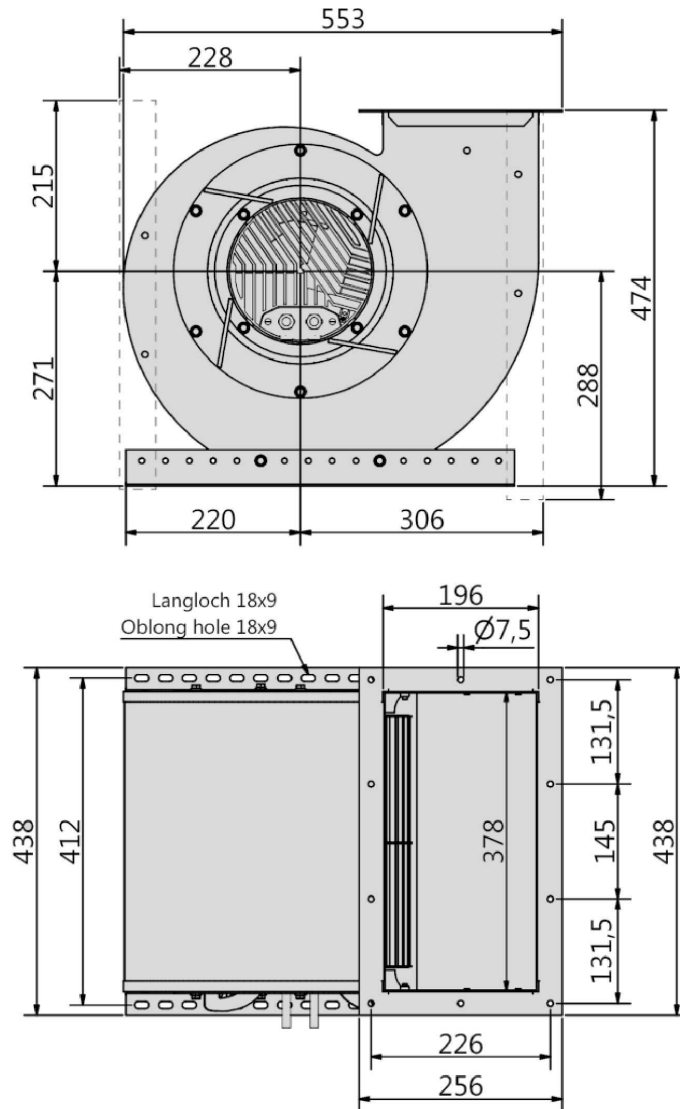
Sound Data:

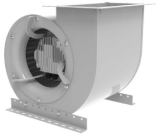
Frequency	Σ	63Hz	125Hz	250Hz	500Hz	1kHz	2kHz	4kHz	8kHz	Distances	1 m	5 m
LwA(A,in) [dB(A)]	-3	-34	-22	-17	-13	-8	-9	-9	-18	LpA(A,in) [dB(A)]	-10	-21
LwA(A,out) [dB(A)]		-30	-23	-16	-9	-5	-6	-6	-17	LpA(A,out) [dB(A)]	-7	-18



Type: **DRAG 281.5FA**

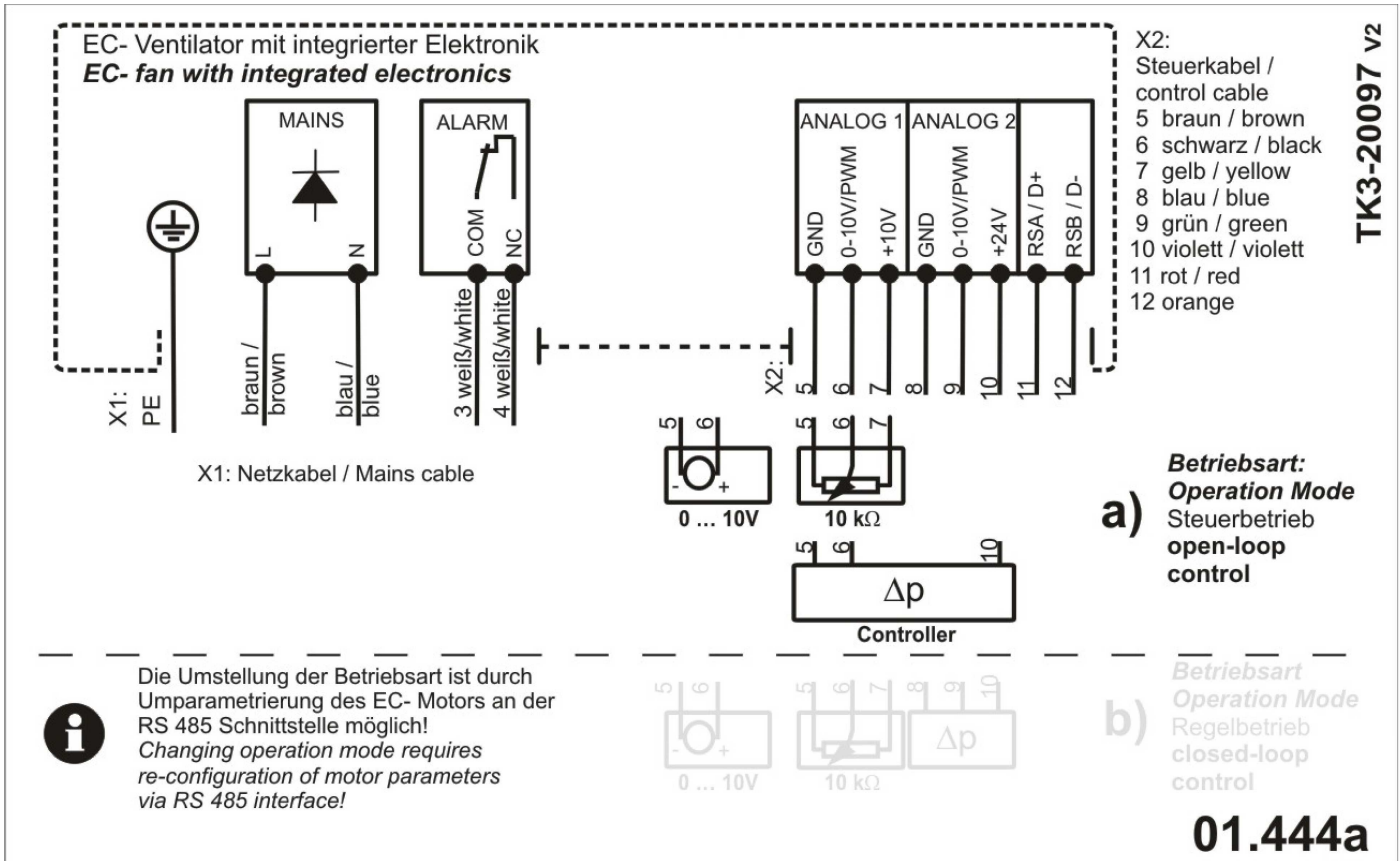
Part no.: C52-28100





Type: **DRAG 281.5FA**

Part no.: C52-28100



EC-Centrifugal Fan

in scroll casing with forward curved impeller

Double inlet impeller made of galvanized steel sheet with forward curved blades. Due to the high number of blades results in a sound optimized and at the same time compact design. Fluidic optimized scroll casing made from galvanized sheet metal. Double inlet. Stands respectively casing mountable in all 90° positions. Motorized Impeller statically and dynamically balanced according to DIN ISO 21940-11 with quality level G2.5. Energy saving EC external-rotor motor exceeds IE4 / Super Premium Efficiency. Maintenance free ball bearings, closed on both sides with long-term lubrication. Magnets without rare earth elements. Motor coated black and/or die casted aluminum. Protection Class IP54. 1-phase types with cable for supply and controlling and integrated active PFC (Power Factor Correction). 3-phase types with integrated terminal box and environmental resistant cable glands (3x M20x1,5). 100% speed controllable with integrated Motor Protection. ModBus RTU Interface integrated. Busconfiguration possible on site by customer. Soft Start. Potential-free Alarm Contact and integrated 24V Supply for Accessories. Applicable in all common energy grids. Low noise commutation.

Fan complies with the guidelines required (Machinery-, EMC- and Low Voltage Directive) to comply with installation and conformity declaration as well as CE marking.

Nominal Data:

Voltage

1~200-277 V

Frequency

50/60 Hz

Input power

1,11 kW

Current

4,9 A

Speed

1550 r/min

Medium temperature

40 °C

Protection Mode

IP 54

Efficiency Class

IE4

Weight

25 kg

Dimensions

553 mm / 438 mm / 474 mm

Contact:

Rosenberg Ventilatoren BV

Elandlaan 8

NL - 3734 CP Den Dolder

www.rosenberg.nl

Type:

DRAG 281.5FA

Article-No.:

C52-28100
