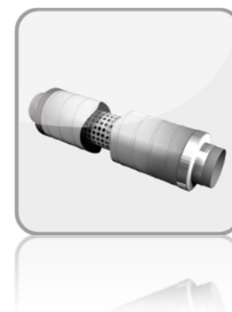


RSD – Sound attenuator

Accessories for Tube Fans / Zerobox (R/RS/Z) / Suprabox Comfort

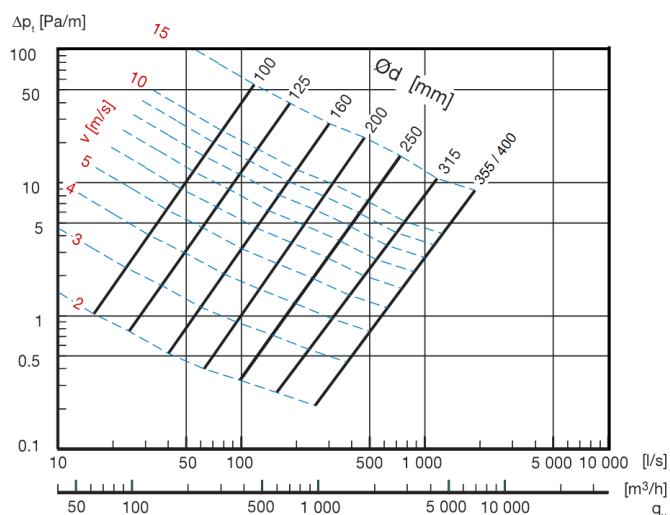
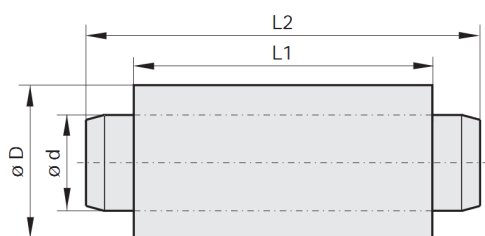
Perforated aluminium tube with 50mm thick sound attenuator packet and helical wound external coat. Direct insertion into the aerating tube or connection via quick connectors.

Suited for Ex-applications.



Technical Data:

Dimensions / Pressure drop:



| Type | Art.No. | L1 [mm] | L2 [mm] | Ø D [mm] | Ø d [mm] | Weight [kg] |
|----------------|-----------|---------|---------|----------|----------|-------------|
| RSD 100 | F13-10000 | 1020 | 1126 | 210 | 100 | 8,0 |
| RSD 125 | F13-12500 | 1020 | 1126 | 230 | 125 | 8,5 |
| RSD 160 | F13-16000 | 1030 | 1130 | 260 | 160 | 11,5 |
| RSD 200 | F13-20000 | 1030 | 1130 | 310 | 200 | 13,5 |
| RSD 250 | F13-25000 | 1070 | 1170 | 365 | 250 | 14,0 |
| RSD 315 | F13-31500 | 1070 | 1170 | 410 | 315 | 16,0 |
| RSD 355 | F13-35500 | 1060 | 1160 | 460 | 355 | 20,0 |
| RSD 400 | F13-40000 | 1060 | 1160 | 510 | 400 | 26,0 |

Technical Data:

Pressure losses:

| Size | Attenuation Value in dB | | | | | | |
|------|-------------------------|--------|--------|-------|-------|-------|-------|
| | 125 Hz | 250 Hz | 500 Hz | 1 kHz | 2 kHz | 4 kHz | 8 kHz |
| 100 | 10 | 17 | 25 | 36 | 40 | 36 | 30 |
| 125 | 8 | 15 | 22 | 33 | 36 | 33 | 26 |
| 150 | 5 | 14 | 20 | 25 | 31 | 28 | 24 |
| 160 | 5 | 14 | 20 | 25 | 31 | 28 | 24 |
| 200 | 5 | 11 | 19 | 24 | 29 | 28 | 21 |
| 250 | 4 | 11 | 17 | 23 | 26 | 23 | 20 |
| 315 | 4 | 9 | 17 | 22 | 24 | 18 | 16 |
| 355 | 4 | 8 | 15 | 21 | 20 | 17 | 16 |
| 400 | 3 | 8 | 14 | 19 | 21 | 15 | 14 |

Scope of delivery:

- Sound attenuator (RSD)